

TAKING YOU(R SETUP) TO A WHOLE NEW LEVEL



Modular, Multi-Target, Highly Individualized

Premium Control Consoles

2021 Pilot Phase - Intro Flyer v1.0



Scalable and fully Customizable: Controllers and Consoles for the Age of Software and Networks.

It is one of the megatrends of our time that flexible Software and Networks are replacing traditional hardware product. Solutions of today need equally flexible Tactile Control Interfaces which enable professional workflows. MakePro is introducing a unique ecosystem of fully configurable Control Interfaces which can be adapted and tuned to perfectly fit your workflow - even when you change it in the future.

Finally, your fully customized premium console has become an affordable reality. Now - operate your system like never before!

AUDIO

MUSIC

MEDIA

LIGHT

CLOUD



Your Size. Your Budget. Your Purpose.

You can dream it? You shall have it. The modular nature of MakePro Consoles sets virtually no relevant limits to the size, shape and functionality of your MakePro Control Solution. And thanks to our elegant and powerful Glue Software, the smallest Device can control the same things like a really large Device. You can even connect multiple Devices to work as one!

Total modularity is also what makes the Glue Software so powerful. New Features and Targets can easily be installed from the Cloud and freely mapped to your Device(s). Now control what you want, the way you want!



XXS

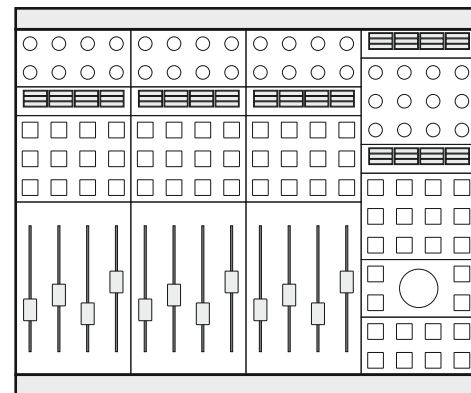


XS



S

...



XL

...

Form Factors

On Table Flat

On Table Wedge

In Table

In Rack

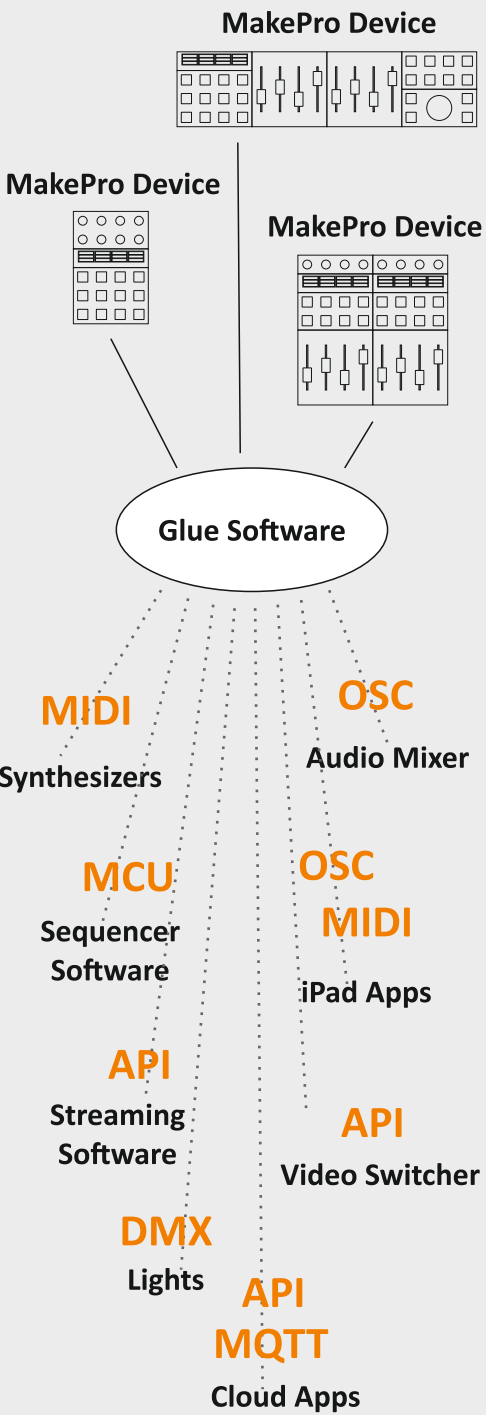
Multi-Target and Multi-Protocol

Today, the typical Controller product connects to precisely one target and “speaks” not more than one protocol at a time. And the moment people need to control more than one thing, some will start to clutter their desks with multiple different controllers, haphazard cabling and more or less terrible looks and ergonomics.

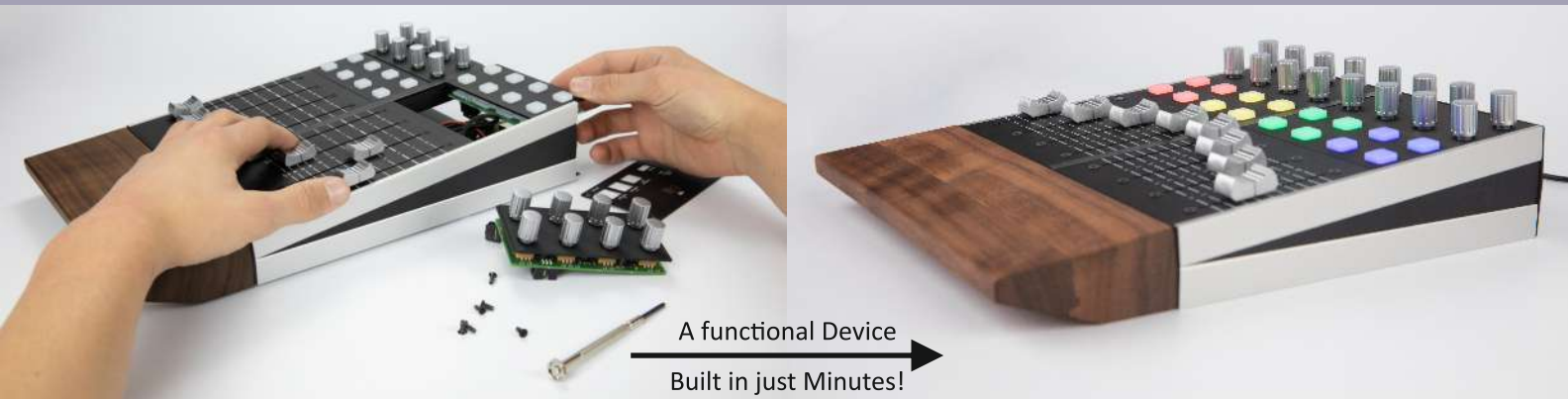
Now, any MakePro Console - small or large - will allow you to clean up your setup and help you save space, improve workflows and get a more stable and easy to maintain setup. Now, a perfectly laid out multi-target Console can even be fitted into a table or a rack! And chances are that you may even save on budget, replacing a whole pile of conventional controller product with a much more neat and productive, customized Console!



++ EXAMPLE SOLUTION ++



++ EXAMPLE SOLUTION ++

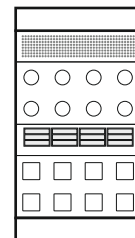
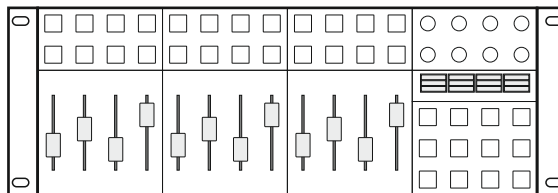
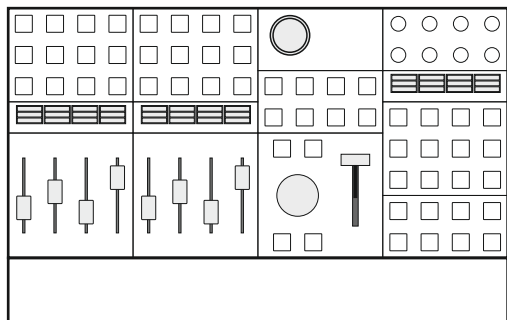


DIY or Plug-and-Play? Have it Your Way.

MakePro Control Solutions are unique and innovative in many ways. One almost incredible fact is that - again due to the unprecedented level of modularity in both hardware and software - everybody can design and build a fully customized, one-of-a-kind MakePro Control Solution.

If you know how a studio works, you can put together an amazing MakePro Solution! No programming skills required - simply chose and combine the right parts and configure them your way. Then upload your Solution to the MakePro Cloud and share it with other users!

But just because you can DIY does not mean that you have to. You may just as well simply decide for and download a ready-made Solution which caters to a certain application and supporting a certain set of Devices. You can order your favourite Device(s) from your certified MakePro Dealer/Integrator and receive them fully assembled and tested - ready to connect to your Targets, ready to rock!





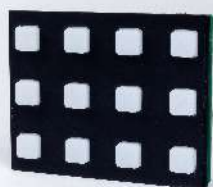
8 RGB Button Tile



8 Encoder Switch/Touch Tile



4 Fader/Touch 60mm Tile



12 RGB Button Tile



12 Encoder Switch/Touch Tile



4 Fader/Touch 100mm Tile



4-OLED Display Tile



Joystick Tile (not) self-centering



XYZ Joystick Tile self-centering



Data Wheel Tile

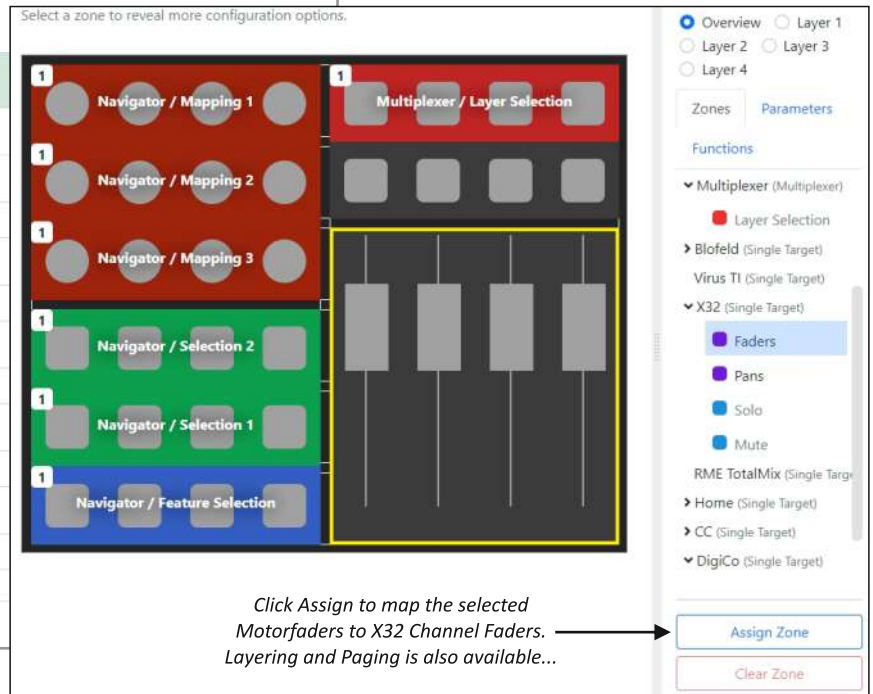


T-Bar Tile



Jog Wheel Tile

The screenshot displays the Glue application's 'Single Target Feature Configuration' window. The interface includes a sidebar on the left with a list of features: Virus TI, Behringer X32 (selected), RME TotalMix, Home, and CC. Below this, the 'Single Target' section shows the 'Behringer X32' feature is 'Activated'. The main configuration area contains fields for Target (X32 - OSC), Glue IP (0.0.0.0), Glue Port (9000), Target IP (127.0.0.1), and Target Port (8000). A 'Test Target' button is present, and a green message indicates 'Connected successfully!'. On the right, a 'Navigator' window shows a grid of buttons for 'Navigator / Mapping 1', 'Navigator / Mapping 2', 'Navigator / Mapping 3', 'Navigator / Selection 2', 'Navigator / Selection 1', and 'Navigator / Feature Selection'. A tooltip at the bottom right suggests clicking an assigned motor fader.



The name says it all. The MakePro Glue Software brings it all together: It ties together all your MakePro Devices and the Targets they control. And it does that in an amazingly simple way - making it a hugely powerful tool to organize your setup and design your preferred workflows. Too complicated? Simply use a ready-made Solution! But how to you build a Solution when you want to? Easy. Install those Features and Target Definitions which you need from the Cloud. Then map Features Zones to Rows and Widgets of your MakePro Controller(s). You're done!

Glue is a very modern piece of software - it can run anywhere in the network. And when a "CPU Tile" is installed in a MakePro Device, it can run even "in the box". Running "headless", its configuration UI can open in a Chrome or Safari browser on another computer in the network. This way, a MakePro Device can be a fully autonomous networked control system - simply plug one single RJ45 cable with PoE (Power over Ethernet) and your Console with integrated Control Solution is ready to go! Compare that with a table full of devices and related cable clutter...

Nouns	
sustainability	die Zukunftsfähigkeit <i>pl. → ☐</i>
sustainability	die Aufrechterhaltung <i>no plural</i>
sustainability	die Kontinuität <i>no plural</i>
sustainability	der Weiterbestand <i>pl.: die Weiterbestände</i>
sustained yield	die Nachhaltigkeit <i>pl. → ☐</i>
sustainability [ENV.][ECON.]	die Nachhaltigkeit <i>pl. → ☐</i>

INDIVIDUALIZED

SCALABLE

DURABLE

REPAIRABLE

NON-OBSOLETE

UNIVERSAL

EXPANDABLE

REPURPOSABLE

SUSTAINABLE



True Value.

Most of us do not only eat the cheapest foods. Or drive the cheapest car. For good reasons. Yet, in some innovation-starved markets it has become a fashion to sell replicas of products we have seen before for cheaper and cheaper - and even cheaper! We are disgusted by this trend. Because what initially looks like a bargain for the buyer is actually highly toxic and a killer for quality and innovation and will soon cost the buyer, his environment and the planet dearly. Beware!

We at MakePro have put our lives and souls into a product that seeks to enable innovation and empowerment and ensures that absolutely nothing about it is to be disposed or prone for obsolescence. Please consider our product for what it is - an AFFORDABLE INVESTMENT and lasting value.



Please get in touch, we hope to hear from you!
community@makeproaudio.com

© 2021 MakeProAudio GmbH - Cologne, Germany